

TRAAAX
Journey Beyond Limits

COBRA
A/T

TRAAAX
Journey Beyond Limits



ABOUT THE BRAND

TRAAAX® is a global heavy-duty tire brand engineered to meet the demands of professional transport across diverse road conditions and operating environments. Designed for trucks, buses, and commercial fleets, **TRAAAX tires** are built to deliver durability, stability, and long-term performance under high loads and extended mileage. Guided by the philosophy **“Journey Beyond Limits,”** the brand represents strength, endurance, and confidence supporting every journey where reliability is critical.

TRAAAX tires are manufactured in China and distributed worldwide, combining advanced production capabilities with strict quality control to meet international performance standards. Through a global distribution network, **TRAAAX** serves key markets across **Dubai, Africa, Congo, Canada, and the wider North American region**, ensuring consistent quality and dependable supply regardless of geography. This global approach allows the brand to adapt its products to varying climates, road conditions, and transport requirements while maintaining a unified standard of performance and safety.

Backed by the experience and infrastructure of **Ziadeh Group**, **TRAAAX** benefits from strong technical expertise, market knowledge, and long-term industry vision. Every tire is developed with a focus on real-world application, offering transport professionals a balance of strength, efficiency, and value that performs beyond expectations mile after mile.

OUR VISION

To establish **TRAAAX®** as a globally recognized heavy-duty tire brand, trusted for its strength, reliability, and consistent performance across international markets.

We envision a future where **TRAAAX** supports transport professionals worldwide by enabling safer, longer, and more efficient journeys regardless of distance, terrain, or conditions.

OUR MISSION

- To manufacture and deliver heavy-duty tires that meet international quality and safety standards
- To support commercial transport and fleet operations with products engineered for durability, load resistance, and long-distance performance
- To combine global manufacturing strength with local market understanding to serve diverse regions effectively
- To continuously enhance product design through innovation, testing, and real-world feedback
- To build lasting partnerships with distributors and customers based on trust, reliability, and long-term value

| N.O. | SIZE | PATTERN | PLY | "DEPTH (mm)" | "WIDTH (mm)" | "WEIGHT (kgs)" | SI | LI |
|------|---------|---------|-----|--------------|--------------|----------------|----|---------|
| 1 | 7.00-16 | RIB | 14 | 11 | 775 | 20.8 | K | 118/114 |
| 2 | 7.00-16 | LUG | 14 | 11 | 775 | 20.8 | K | 118/114 |
| 3 | 750-16 | RIB | 14 | 11 | 215 | 23.4 | G | 122/118 |
| 4 | 750-16 | LUG | 14 | 11 | 215 | 23.4 | G | 122/118 |
| 5 | 7.00R16 | YB268 | 14 | 12 | 200 | 25.5 | L | 118/114 |
| 6 | 7.00R16 | YB228 | 14 | 14 | 200 | 26.22 | L | 118/114 |
| 7 | 7.00R16 | YB338 | 14 | 20 | 200 | 29.5 | L | 118/114 |
| 8 | 7.00R16 | YB168 | 14 | 10.5 | 200 | 23.5 | L | 117/114 |
| 9 | 7.00R16 | YB288 | 14 | 12 | 200 | 24 | L | 117/114 |
| 10 | 7.50R16 | YB268 | 14 | 12 | 215 | 28.5 | L | 122/118 |
| 11 | 7.50R16 | YB228 | 14 | 14 | 215 | 30.5 | K | 122/118 |
| 12 | 7.50R16 | YB388 | 14 | 20 | 215 | 33.5 | L | 122/118 |
| 13 | 7.50R16 | YB288 | 14 | 12 | 215 | 29 | L | 122/118 |



RIB



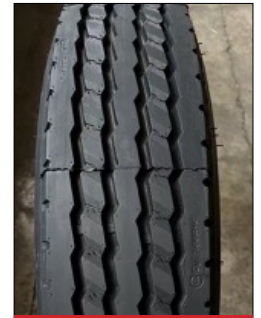
LUG



GT268



YB/GT228



YB118



YB288

| N.O. | SIZE | PATTERN | PLY | DEPTH (mm) | WIDTH (mm) | WEIGHT (kgs) | SPEED INDEX | LOAD INDEX |
|------|---------|---------|-----|------------|------------|--------------|-------------|------------|
| 1 | 12R22.5 | GT268 | 18 | 17.5 | 300 | 60.67 | L | 152/149 |
| 2 | 12R22.5 | GT298+ | 18 | 17 | 300 | 61.22 | L | 152/149 |
| 3 | 12R22.5 | GT296++ | 18 | 20.5 | 300 | 64.12 | L | 152/149 |
| 4 | 12R22.5 | GT01 | 18 | 15 | 300 | 56.5 | L | 152/149 |
| 5 | 12R22.5 | GT02 | 18 | 15 | 300 | 56.1 | L | 152/149 |
| 6 | 12R22.5 | T170 | 18 | 21 | 300 | 69.9 | L | 152/149 |
| 7 | 12R22.5 | T180 | 18 | 21 | 300 | 69.9 | L | 152/149 |
| 8 | 12R22.5 | T190 | 18 | 15.5 | 300 | 57 | L | 152/149 |
| 9 | 12R22.5 | GT777 | 18 | 16.5 | 300 | 64.6 | L | 152/149 |
| 10 | 12R22.5 | GT888 | 18 | 17 | 300 | 64.6 | L | 152/149 |
| 11 | 12R22.5 | GT999 | 18 | 20.5 | 300 | 64.8 | L | 152/149 |
| 12 | 12R22.5 | GT398+ | 18 | 19 | 300 | 68.4 | L | 152/149 |



| N.O. | SIZE | PATTERN | PLY | "DEPTH (mm)" | "WIDTH (mm)" | "WEIGHT (kgs)" | SI | LI |
|------|---------|---------|-----|--------------|--------------|----------------|----|---------|
| 1 | 13R22.5 | GT268 | 20 | 17.5 | 320 | 75.11 | L | 154/151 |
| 2 | 13R22.5 | GT228 | 20 | 22 | 320 | 79.39 | L | 154/151 |
| 3 | 13R22.5 | GT328 | 20 | 21.5 | 320 | 77.71 | L | 154/151 |
| 4 | 13R22.5 | GT366 | 20 | 18 | 320 | 76.67 | L | 154/151 |
| 5 | 13R22.5 | GT398+ | 20 | 21.5 | 320 | 80.57 | L | 154/151 |
| 6 | 13R22.5 | GT601 | 20 | 18 | 320 | 76.67 | L | 154/151 |



GT398+



GT228



GT328



GT366



GT268

| N.O. | SIZE | PATTERN | PLY | "DEPTH (mm)" | "WIDTH (mm)" | "WEIGHT (kgs)" | SI | LI |
|------|-------------|---------|-----|--------------|--------------|----------------|----|---------|
| 1 | 1200R20 | GT228 | 20 | 17.5 | 320 | 75.11 | L | 156/153 |
| 2 | 1200R20 | GT268 | 20 | 22 | 320 | 79.39 | L | 154/157 |
| 3 | 1200R24 | GT228 | 20 | 17.5 | 320 | 75.11 | L | 154/151 |
| 4 | 1200R24 | GT288 | 20 | 22 | 320 | 79.39 | L | 154/151 |
| 5 | 325/955R24 | GT268 | 20 | 21.5 | 320 | 77.71 | L | 154/157 |
| 6 | 385/65R22.5 | GT395 | 20 | 18 | 320 | 76.67 | L | 154/151 |



GT228



GT268



GT288



T180